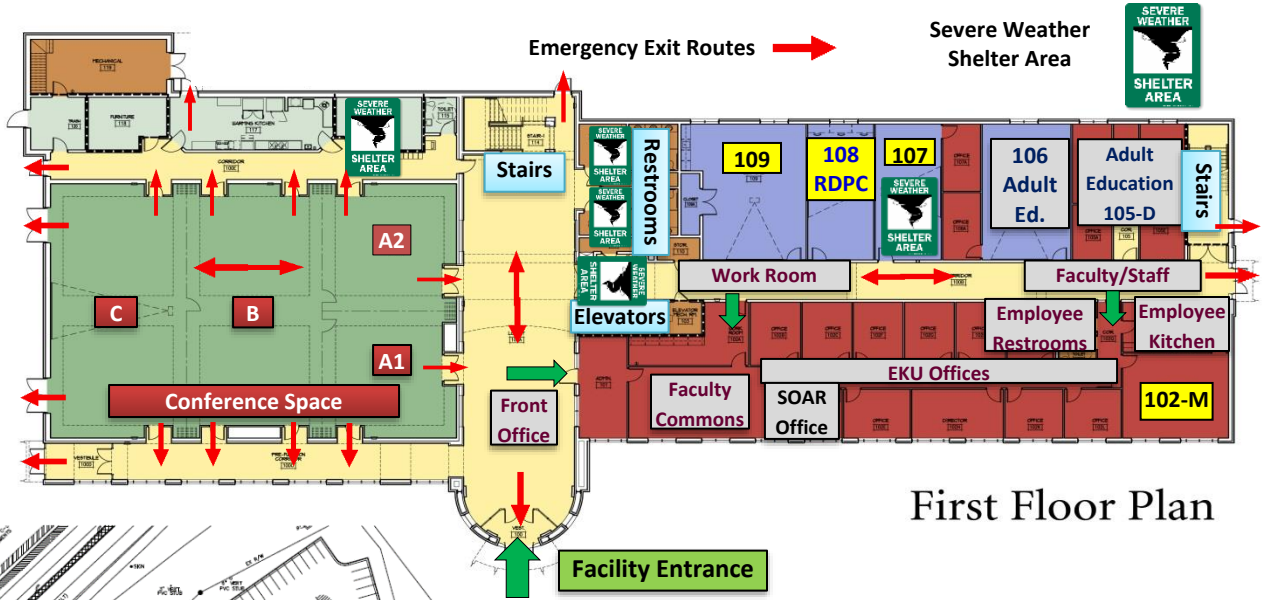
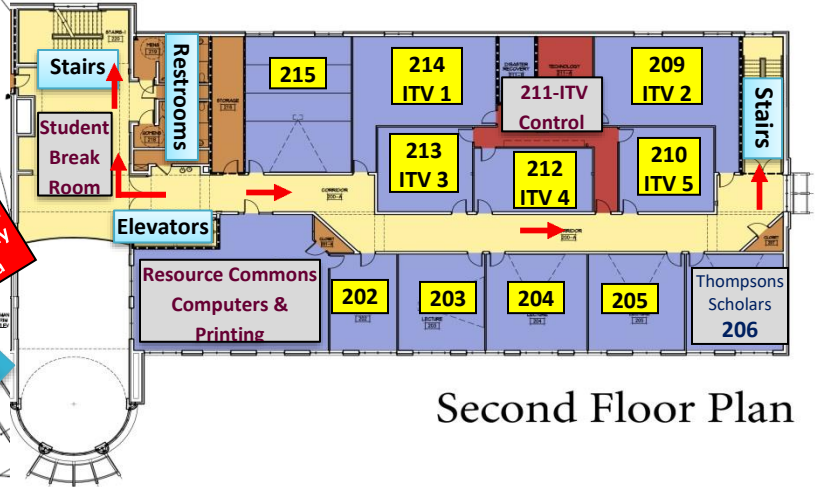
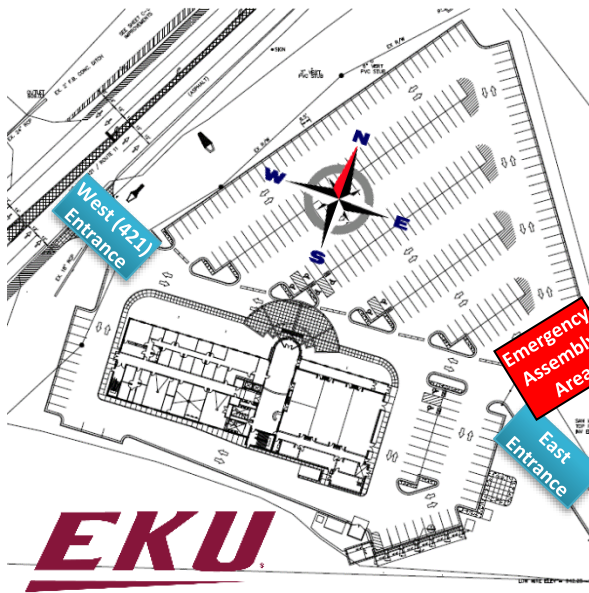


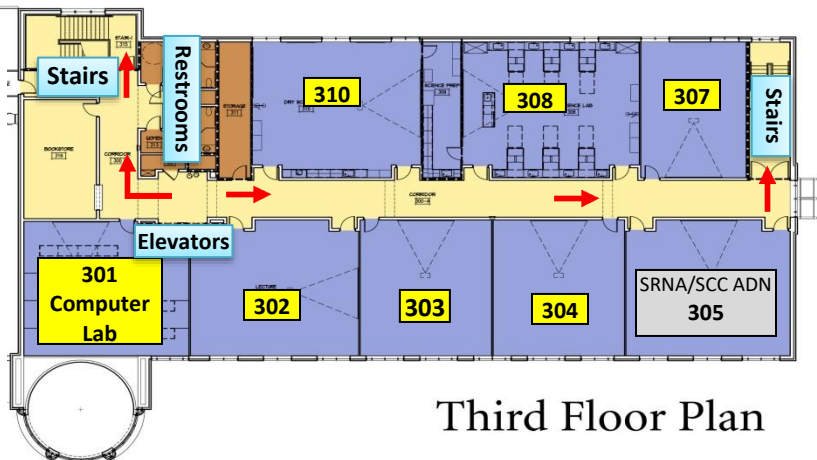
EKU MANCHESTER FACILITY FLOOR PLAN



First Floor Plan



Second Floor Plan



Third Floor Plan

(606) 598-8122

www.manchester.eku.edu

Room	Seating Capacity
102-M	15 U-shape conference table
109	28 (24x60 Tables)
203	18 (Lounge Chairs)
204	18 (24x60 Tables)
205	20 (Intellect)
206	18 (24x60 Tables)
209 ITV 2	24 (24x60 Tables)
210 ITV 5	12 (24x60 Tables)
212 ITV 4	12 (24x60 Tables)
213 ITV 3	12 (24x60 Tables)
214 ITV 1	24 (24x60 Tables)
215	30 Tiered Lecture Hall
301	28 Tiered Computer Lab
302	44 Intellect
303	35 (7 round tables)
304	44 (24x60 Tables)
305	12 Desk Chairs, up 44
307	32 (Tables)
308	24
310	32

Driving Directions: Visit www.511.ky.gov or call 511 for the most up-to-date Travel Information.
From I-75

- Take the KY-80 exit (London, KY exit #41), formerly known as the Daniel Boone Parkway, now the Hal Rogers Parkway.
- Turn east onto the Hal Rogers Parkway (Travel @ 22 miles).
- Take the Manchester Exit (exit # 20).
- Turn Left onto KY-80 (This becomes US-421).
- Eku Manchester will be exactly ½ mile on your right.